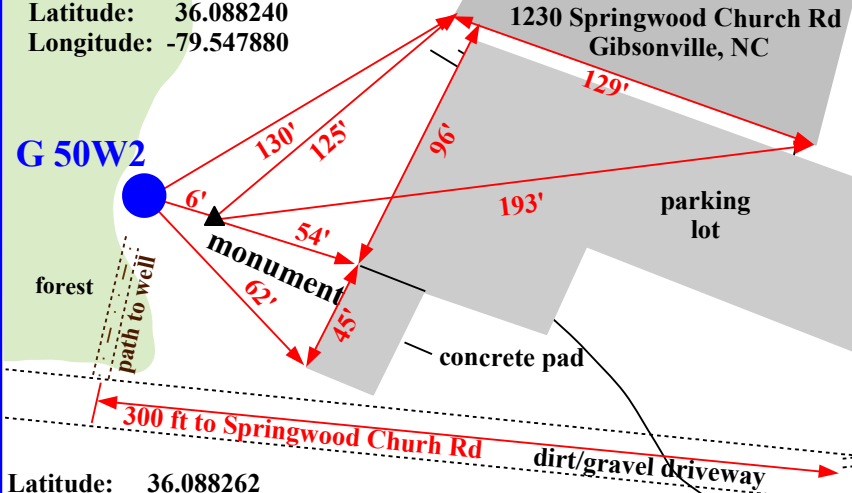


R10 Monument
Coordinates (03-02-2015)
Latitude: 36.088240
Longitude: -79.547880

G 50W2

Latitude: 36.088262
Longitude: -79.547915

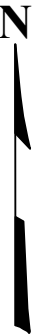
Carolina Custom
Promotions
1230 Springwood Church Rd
Gibsonville, NC



Site Map

North Carolina
Monitoring Well Network
Gibsonville Site, G 50W
South of Gibsonville,
Guilford County, NC

NOTE: This map is for informational purposes only. It does not authorize any party to enter onto any lands depicted herein.



Carolina Custom Promotions

Gibsonville Monitoring Station (1 well)

Alamance Memorial Park

